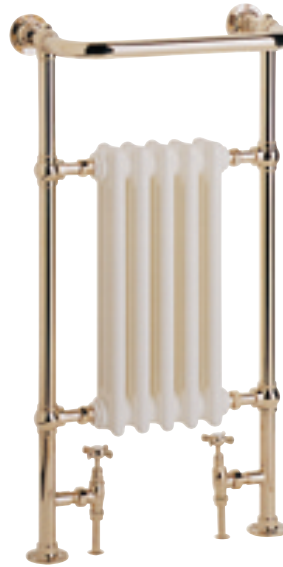


Baby Clifton

Heated Towel Rail

AH#80

TRADITIONAL HEATED TOWEL RAILS



Logo as it appears on product: HERITAGE

FEATURES

- Brass Construction
- Traditional Design
- Chrome or Antique Gold
- Supplied with Traditional Valves in Chrome or Antique Gold finish.
- 5 Year Guarantee

FINISHES AVAILABLE

Chrome	AHC80
Antique Gold	AHA80

INCLUDED COMPONENTS

Heated Towel Rail	
Boxed Weight	15 Kgs
Box Size	1015 x 575 x 295mm
Traditional Valves	
Boxed Weight	1.6 Kgs
Boxed Size	54 x 258 x 189mm

PRODUCT DETAILS

- Includes decorative screws and fixings.
- Includes pair of Traditional Valves.
- Output 1790 Btu (525 watts)*
- * at Delta T

SPARE PARTS

Chrome screws	QSP147
Gold screws	QSP146
HTR indicies	QSP148

DIMENSIONS

